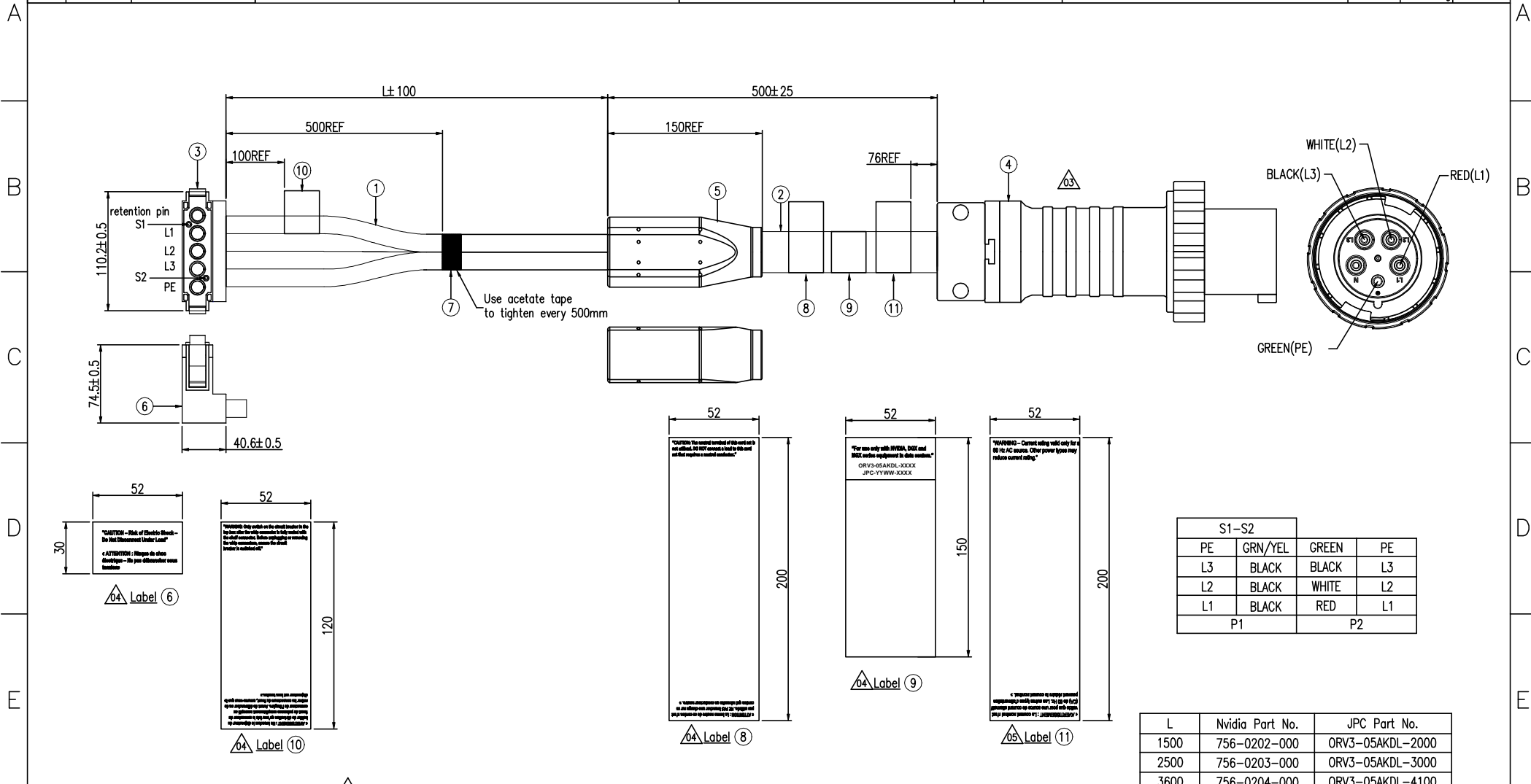


1	2	3	4	5	6	7	8				
THIS DRAWING AND THE DATA DISCLOSED HEREIN OR HEREWITH IS NOT TO BE REPRODUCED USED OR DISCLOSED IN WHOLE OR IN PART TO ANYONE WITHOUT THE PERMISSION OF JESS-LINK PRODUCTS CO.,LTD.(JPC)				CUSTOMER DRAWING DRWC-XXXXXX		REV.	ECN NO.	DESCRIPTION	MDF'D	APP'D	DATE
						03		UPDATE IEC60309 CONN SCHEMATIC & CABLE DESCRIPTION	Bovan Lu	Max Yang	03/30/2026
						04		Add label content	Bovan Lu	Max Yang	05/12/2026
						05		Add label content	Bovan Lu	Max Yang	05/22/2026



11	-	-	LABEL	05	1	PCS
10	-	-	LABEL		1	PCS
9	-	-	LABEL		1	PCS
8	-	-	LABEL		1	PCS
7	-	-	ACETATE TAPE, W=30mm, BLACK		A/R	
6	-	-	LABEL		2	PCS
5	-	-	JUNCTION BOX MOLDING		1	PCS
4	-	-	IEC60309 PLUG, 100AMP, 240/415V, 4P5W, IP67, 6H COLOR CODE RED	02	1	PCS
3	-	-	100AMP CONNECTOR		1	PCS
2	-	-	CABLE, UL 1650 TYPE W, 2#*4C, 90°C	03	1	PCS
1	-	-	CABLE, UL 2137, 1#*1C, 150°C, Silicone Rubber	03	4	PCS
ITEM	SUPL	SUPL PN	DESCRIPTION		Q'TY	

RoHS COMPLIANT
HALOGEN FREE

Unit:mm(inch)
GENERAL TOLERANCES: (UNLESS SPECIFIED)
0 = ±1 (0.039)
0.0 = ±5 (0.02)
0.00 = ±3 (0.012)
0.000 = ±15(0.006)
σ = ± 2'
0.0' = ± 1'

PROJECTION
D.R. 01/12/2026
Bovan Lu
CH.K 01/12/2026
Daniel Chen
APV.D 01/12/2026
Max Yang

JPC connectivity

TITLE: 100AMP AC WHIP OVERMOLDED CABLE(RIGHT ANGLE)
TO AMPHENOL 4P5W 6H

SCALE: 1:1
SIZE: A4
PART NO.: ORV3-05AKDL-XXXX

PD./FILE NO.: XXXXXXXXX
X-XXXX
REV. 05
SHEET 1 OF 1